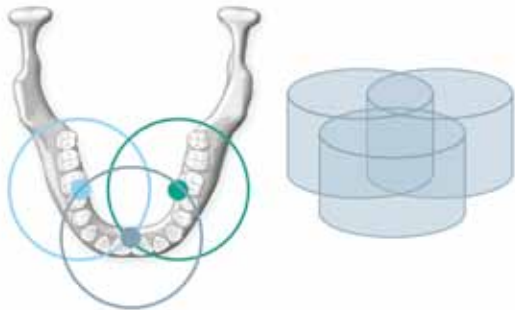


# 3D Stitching Program

for the KODAK 9000 3D and KODAK 9000C 3D  
Extraoral Imaging Systems

## Expand your 3D imaging capabilities

The industry's most user-friendly 3D system now features stitching technology to allow users to address cases requiring a larger view of the dental anatomy. Automatically combining up to three localized volumes, this new 3D acquisition mode gives users the ability to construct larger images. A great solution for full-arch implant rehabilitation, large pathologies, and multiple impactions, our new



3D stitching program provides a simple solution for your extended-field 3D imaging needs.

## Optimize your diagnoses

Offering a resolution of 200  $\mu\text{m}$ , our 3D stitching program helps you obtain the clear, true-to-life visuals you need to make confident diagnoses. The system's versatile 3D programs allow you to select the most appropriate resolution for your diagnostic needs. This low-dose technology makes the stitching program a safe choice for your 3D imaging needs.



## The best of both worlds

Our 3D stitching program not only offers new options for your extended-field 3D imaging needs, but also maintains all the benefits of a focused-field 3D imaging system:

- **Low dose technology:** At just twice the dose of a panoramic exam, focused-field 3D imaging delivers the lowest possible dose during 3D exams.
- **High-resolution images:** Our focused-field 3D imaging program offers the highest resolution (76  $\mu\text{m}$ ) in the industry.
- **User-friendly system:** A system designed with ease of use in mind.
- **Exceptional value:** A two-in-one solution offering both panoramic and 3D imaging capabilities.

# Affordability at its best

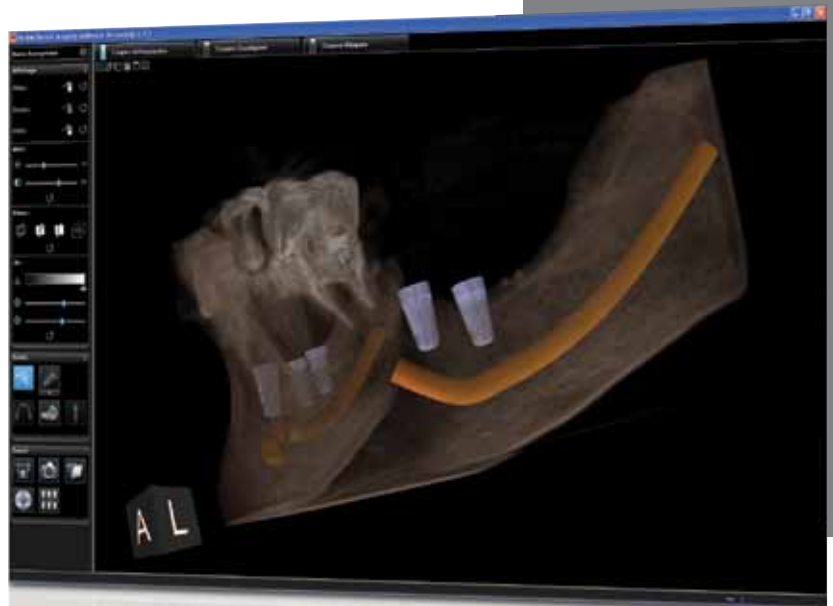
## Complete automation

To use the stitching program, simply select the option from your user interface and the software does the rest—automatically combining the volumes into one ready-to-use 3D volume. And with just one volume to manipulate, implant planning is now faster and easier than ever.

## The smart solution for new and existing customers

Now a feature for new Kodak 9000 3D and Kodak 9000C 3D Systems, the 3D stitching program is also available as an upgrade for current users. The 3D stitching upgrade kit transforms your current unit, giving it the ability to generate both extended and focused field-of-view 3D images. New customers reap the benefits immediately, while current users can easily upgrade their system—making it a cost-effective choice for any dental professional.

Simply put, the Kodak 9000 3D system with new stitching technology is the safest, most accessible way to combine extended and focused-field 3D imaging.



### TECHNICAL SPECIFICATIONS (FOR STITCHING PROGRAM)

Acquisition time:	3 volumes: 69 sec. 2 volumes: 46 sec.
Maximum 3 volume stitching size:	93 (W) x 74 (D) x 37 (H) mm +/-15%
Reconstruction time:	Less than 2 minutes based on the recommended computer system configuration requirements
Resolution:	200µm
Stitching program:	Horizontal stitching, 2 or 3 volumes
Stitching upgrade:	Available for all Kodak 9000 3D / 9000C 3D units

For more information, contact your local representative or visit [www.carestreamdental.com](http://www.carestreamdental.com).

**Kodak**  
Licensed Product

Carestream Dental

©Carestream Health, Inc. 2010.  
The Kodak trademark and trade dress are used under license from Kodak.